



Mortara Intermodal Terminal Presentation



MORTARA INTERMODAL TERMINAL

Localization

At the crossing point between the **Mediterranean Corridor** and the **Rhine-Alpine Corridor** of the TEN-T Network

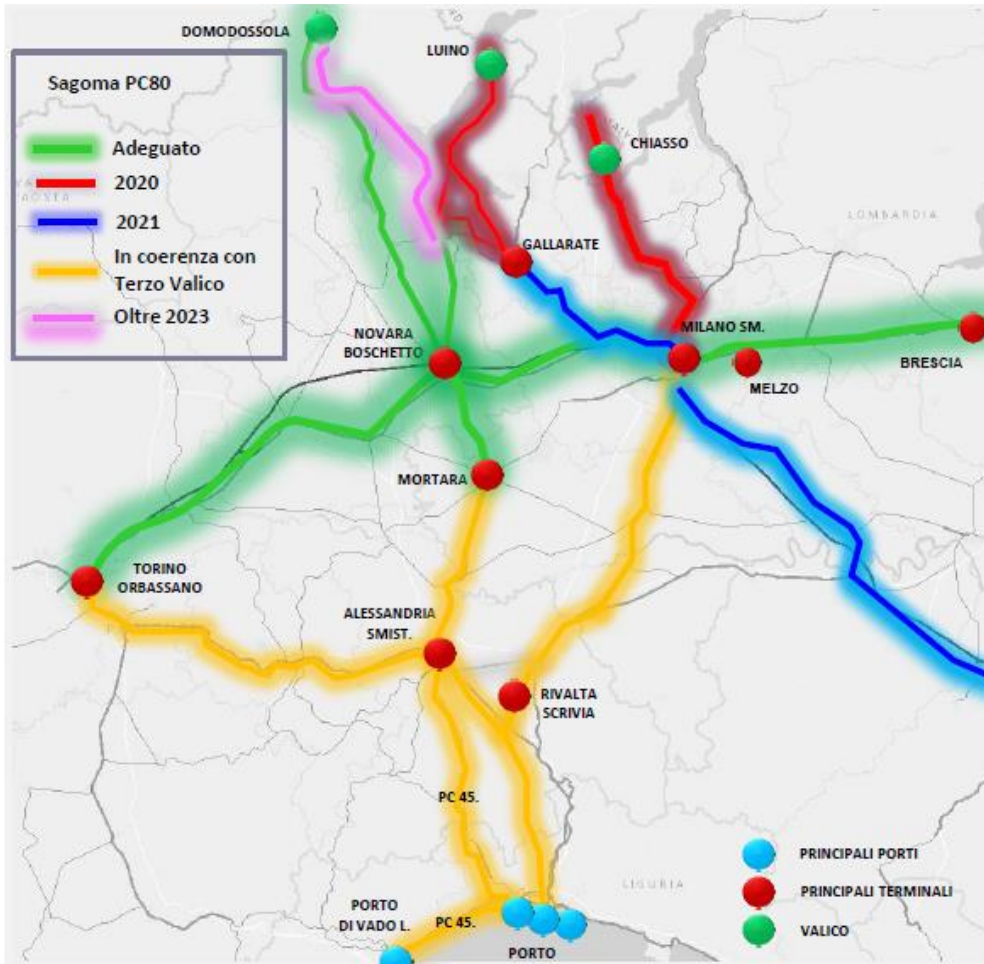
Connection to:

- International alpine transit (Modane, Sempione-Lötschberg, Luino-Gotthard);
- Ligurian port system;
- Milan metropolitan area.



MORTARA INTERMODAL TERMINAL

Railway network



Mortara junction is located on the Ligurian ports – Lötschberg tunnel – Gotthard Tunnel railway route.

The loading gauge between Mortara and Novara has been recently updated to P/C 400 – P/C 80, the maximum allowed in Europe.

MORTARA INTERMODAL TERMINAL

Road access

Connection to:

- **highways** nr. **A4**, **A7** and **A26** through the motorways network
- the scheduled **regional highway** Broni-Pavia-Mortara;

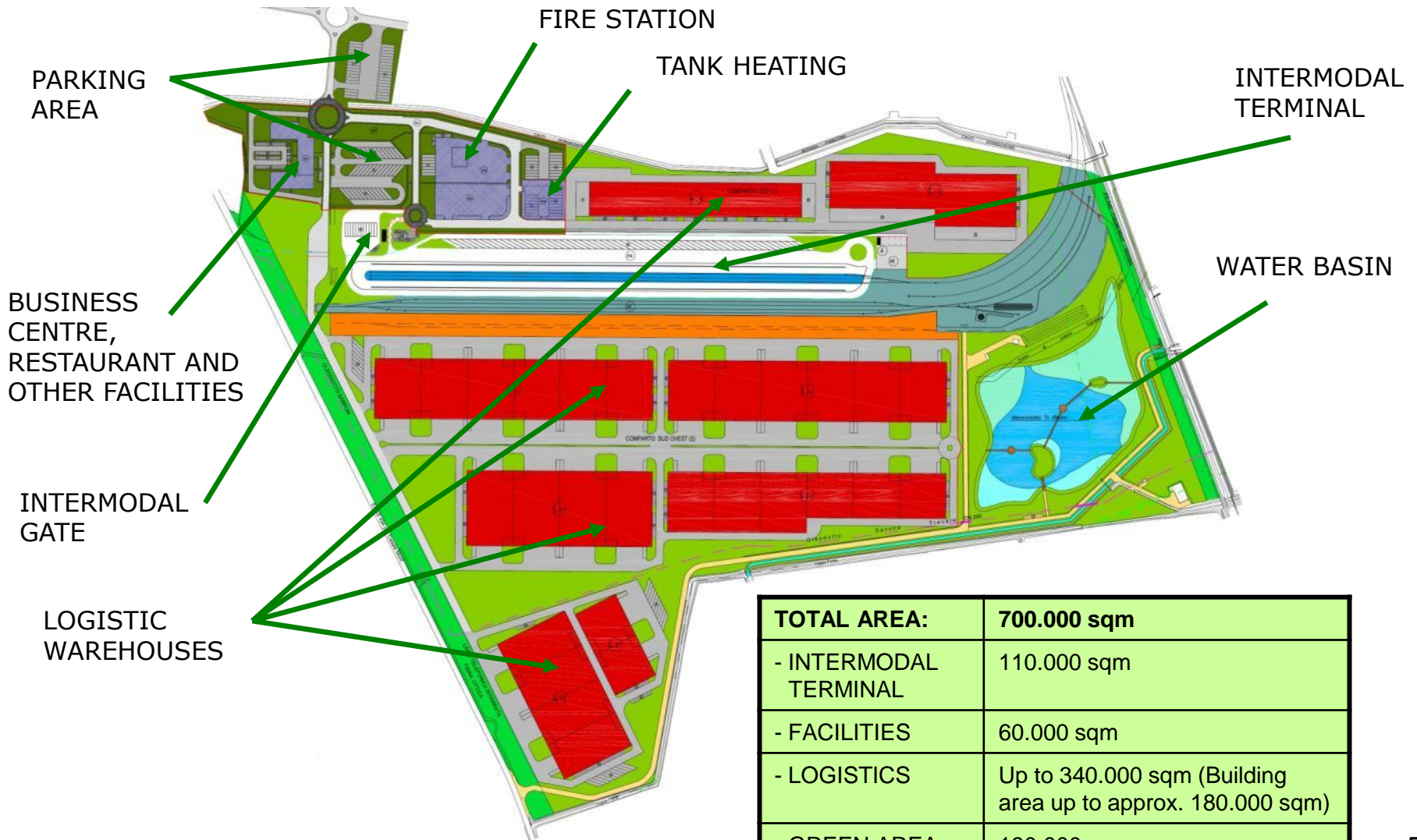
Improved infrastructures:

- road widening and implementation of security condition of the former SS596;
- completion of Mortara bypass



MORTARA INTERMODAL TERMINAL

The freight village layout



TOTAL AREA:	700.000 sqm
- INTERMODAL TERMINAL	110.000 sqm
- FACILITIES	60.000 sqm
- LOGISTICS	Up to 340.000 sqm (Building area up to approx. 180.000 sqm)
- GREEN AREA	180.000 sqm

MORTARA INTERMODAL TERMINAL

Intermodal terminal – main features

Intermodal Area of 110.000 sqm

3 handling tracks 650 m long

4 arrival / departure electrified tracks 650 m long

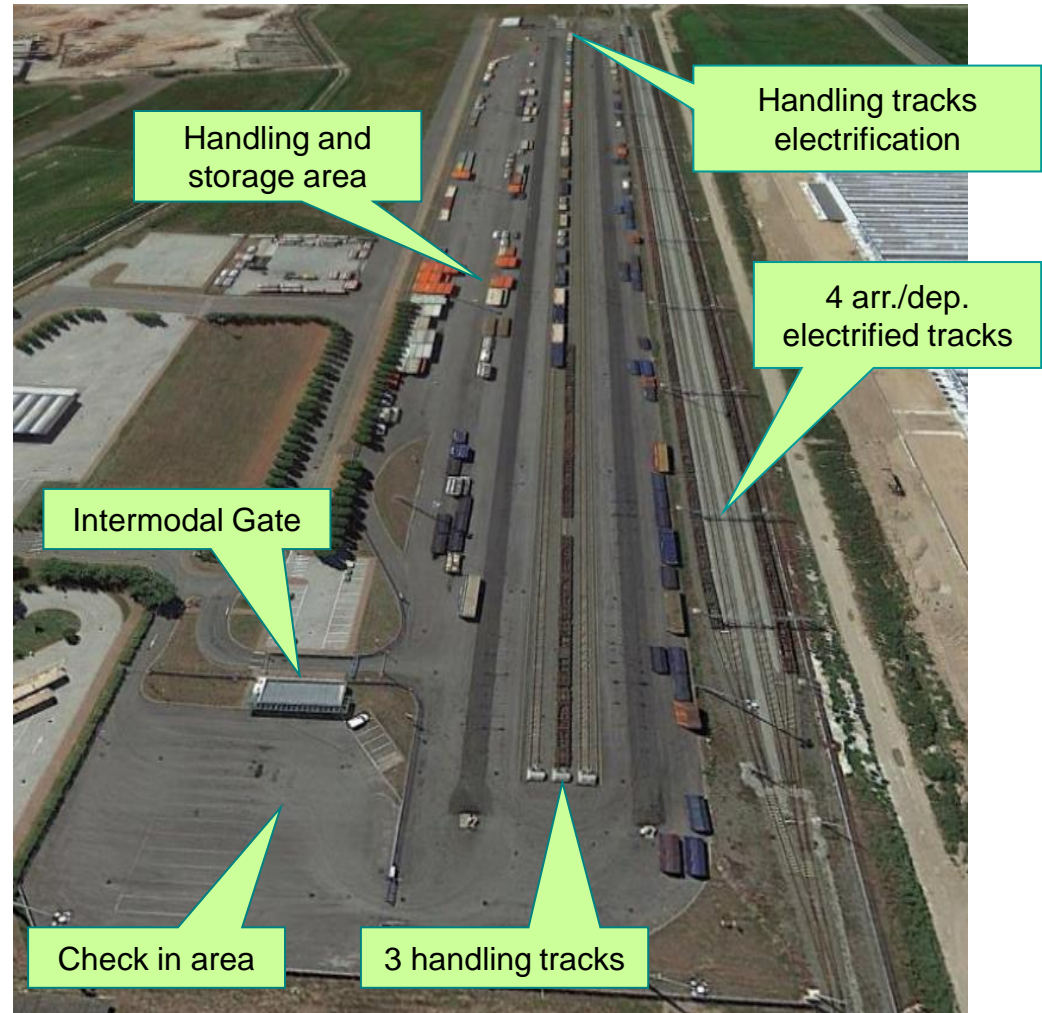
Current loading gauge (gabarit) P/C 80 - P/C 410

Max axle load 22,5 ton/axle (D4L)

Substructure equipped for the use of rail mounted gantry cranes

Arrivals/departures of trains directly to/from the terminal

Monitored area endowed with technologically advanced anti-intrusion systems



MORTARA INTERMODAL TERMINAL

Intermodal terminal – main features



**Terminal: 3 handling
tracks 650 m long,
partially electrified**

MORTARA INTERMODAL TERMINAL

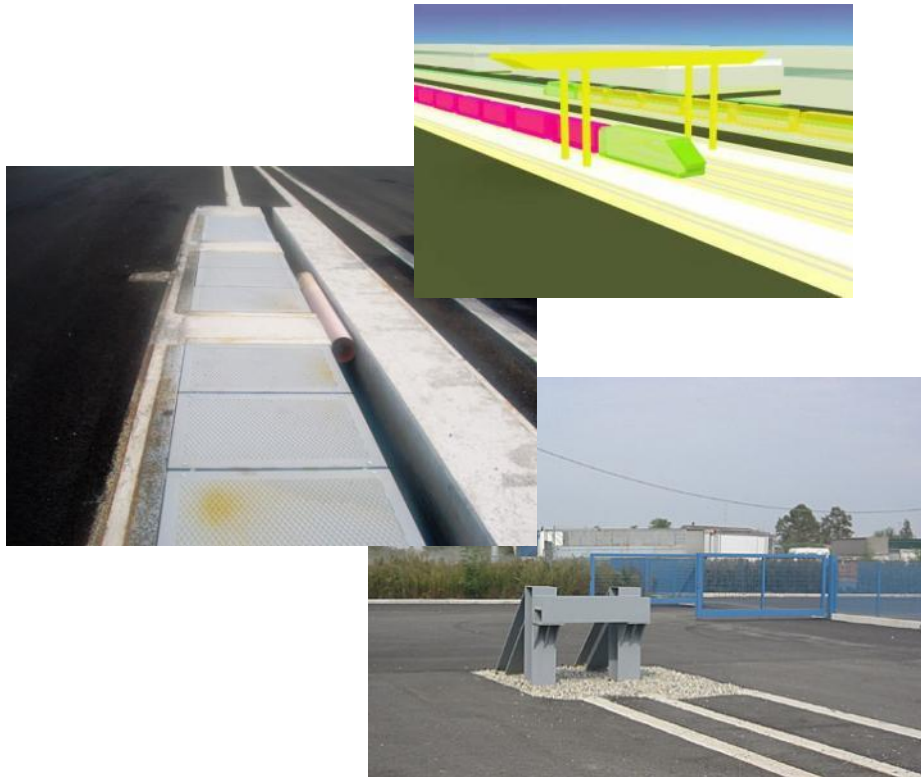
Intermodal terminal – main features



**Arr./dep. yard:
4 electrified tracks
650 m long**

MORTARA INTERMODAL TERMINAL

Intermodal terminal – main features



**Substructure equipped for the use
of rail mounted gantry cranes**

Anti-intrusion System



MORTARA INTERMODAL TERMINAL

Intermodal terminal – main features



Check-in / check-out



MORTARA INTERMODAL TERMINAL

Intermodal terminal – main features



Tank heating

Fire Brigade



Business Center

Hotel & Restaurant



MORTARA INTERMODODAL TERMINAL

Logistic areas – main features



Eco-sustainable warehouse with features at the highest level

- 12 m high-bay storage areas
- Several loading / unloading docks
- Zenithal day-lightning and ventilation according the industrial rules (more severe than logistic ones)
- Isolation according the industrial rules (more severe than logistic ones)
- Roofs equipped with solar panels
- Recycling of rain water for irrigation
- Great care of the landscape and environmental impact.

MORTARA INTERMODAL TERMINAL

Intermodal terminal – facts and figures



21st November 2009
Inauguration day

10 days

1st December 2009
1° train and start up

MORTARA INTERMODAL TERMINAL

Intermodal terminal – facts and figures



2009

**Terminal inauguration
First train to Rotterdam**



2010

New Y-shuttle Mortara-Venlo-Rotterdam



2011

Test train Mortara-Savona

2012

New train Mortara-Krefeld

2013

New train Mortara-Gent

2014

Test train Mortara-Marseilles

MORTARA INTERMODAL TERMINAL

Intermodal terminal – facts and figures



2017

Test train Mortara-Chengdu



2018

**New train Mortara-Marseilles
Test train Mortara-Xi'an
New Y-shuttle Mortara-Kaldenkirchen-Krefeld**

2019

New company train Mortara-Paris



2022

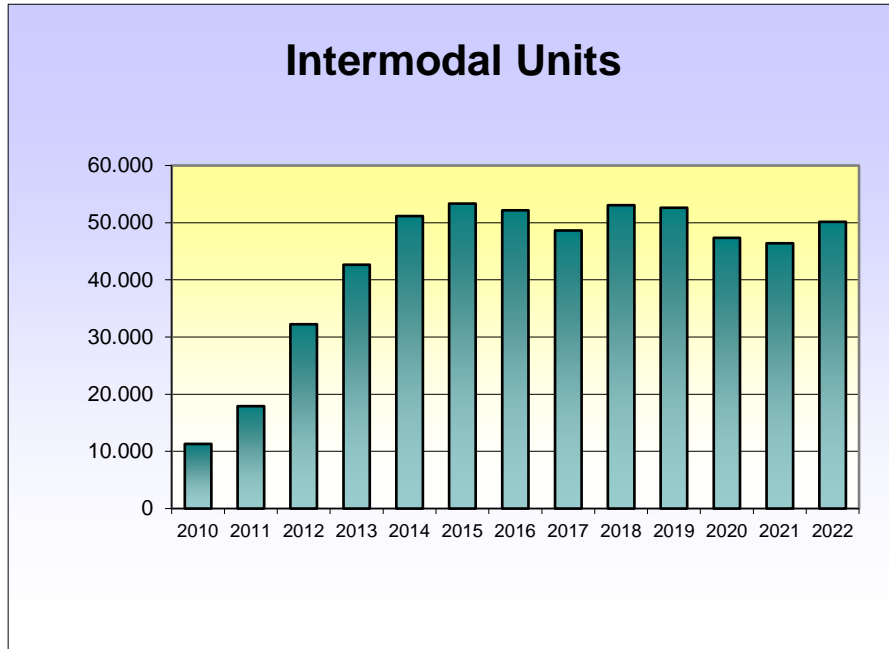
New train Mortara-Venlo

2023

**New train Mortara-Bari Giovinazzo
New train Mortara-Duisburg**

MORTARA INTERMODAL TERMINAL

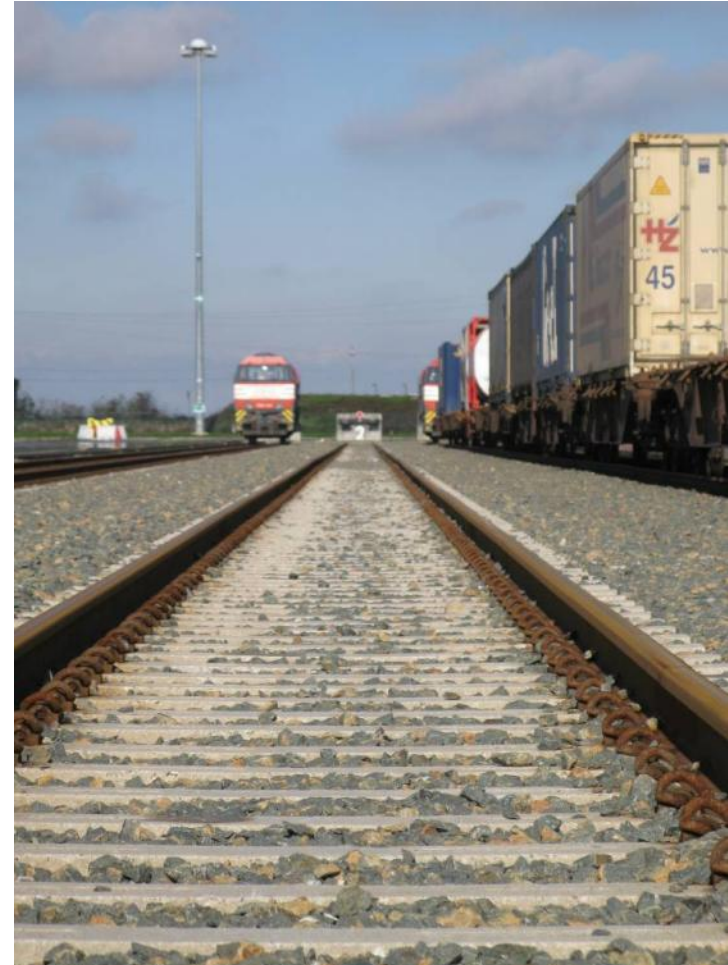
Intermodal terminal – facts and figures



Terminal capacity

- 6 train pairs / day
- 65.000 ILU / year

(*) ILU = Intermodal Loading Unit



MORTARA INTERMODAL TERMINAL

Intermodal terminal – facts and figures



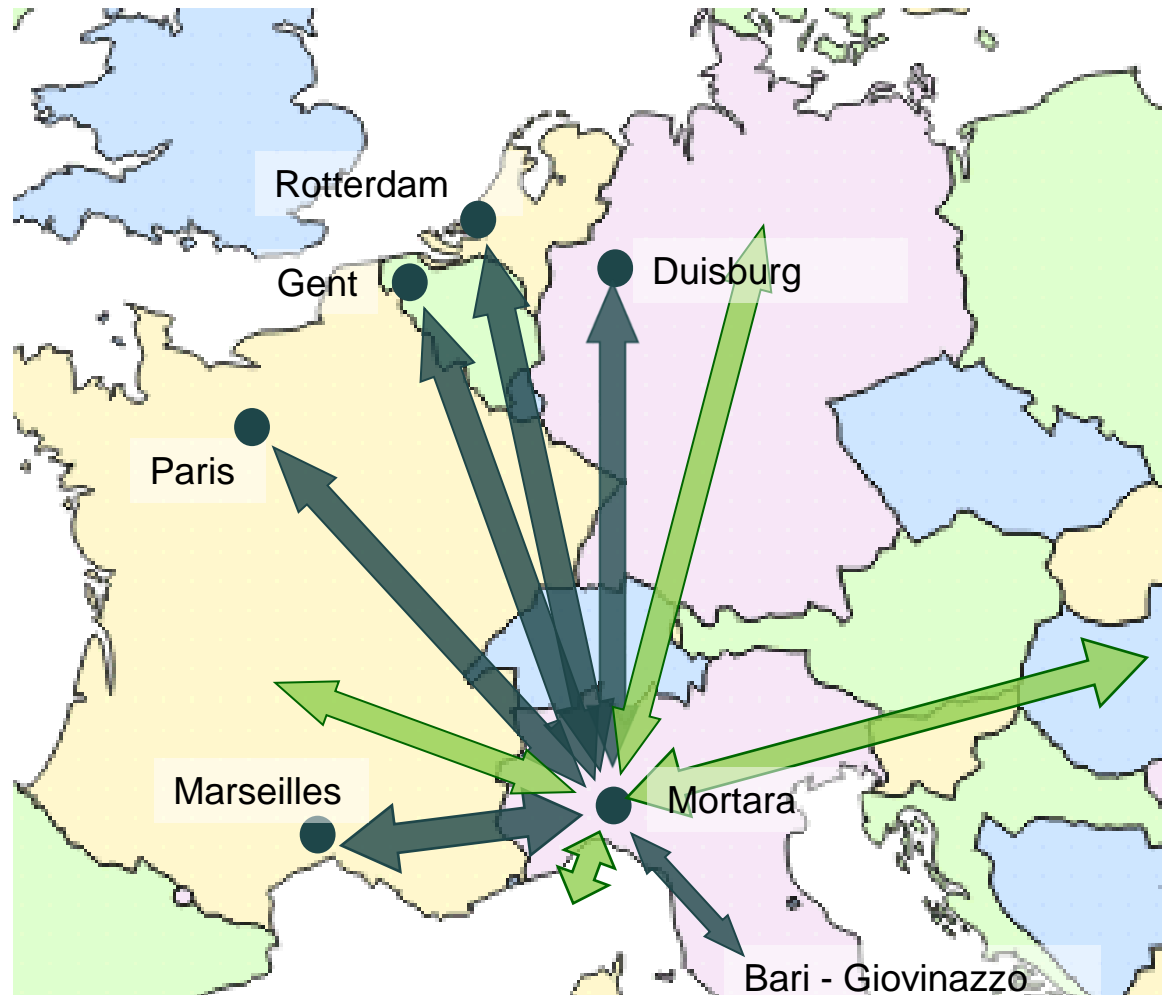
Existing traffic

- Rotterdam 5 rt / week
- Duisburg 3 rt / week
- Gent 6 rt / week
- Bari 3 rt / week
- Marseilles 1 rt / week
- Paris (ct) 1 rt / week



Plans for future development

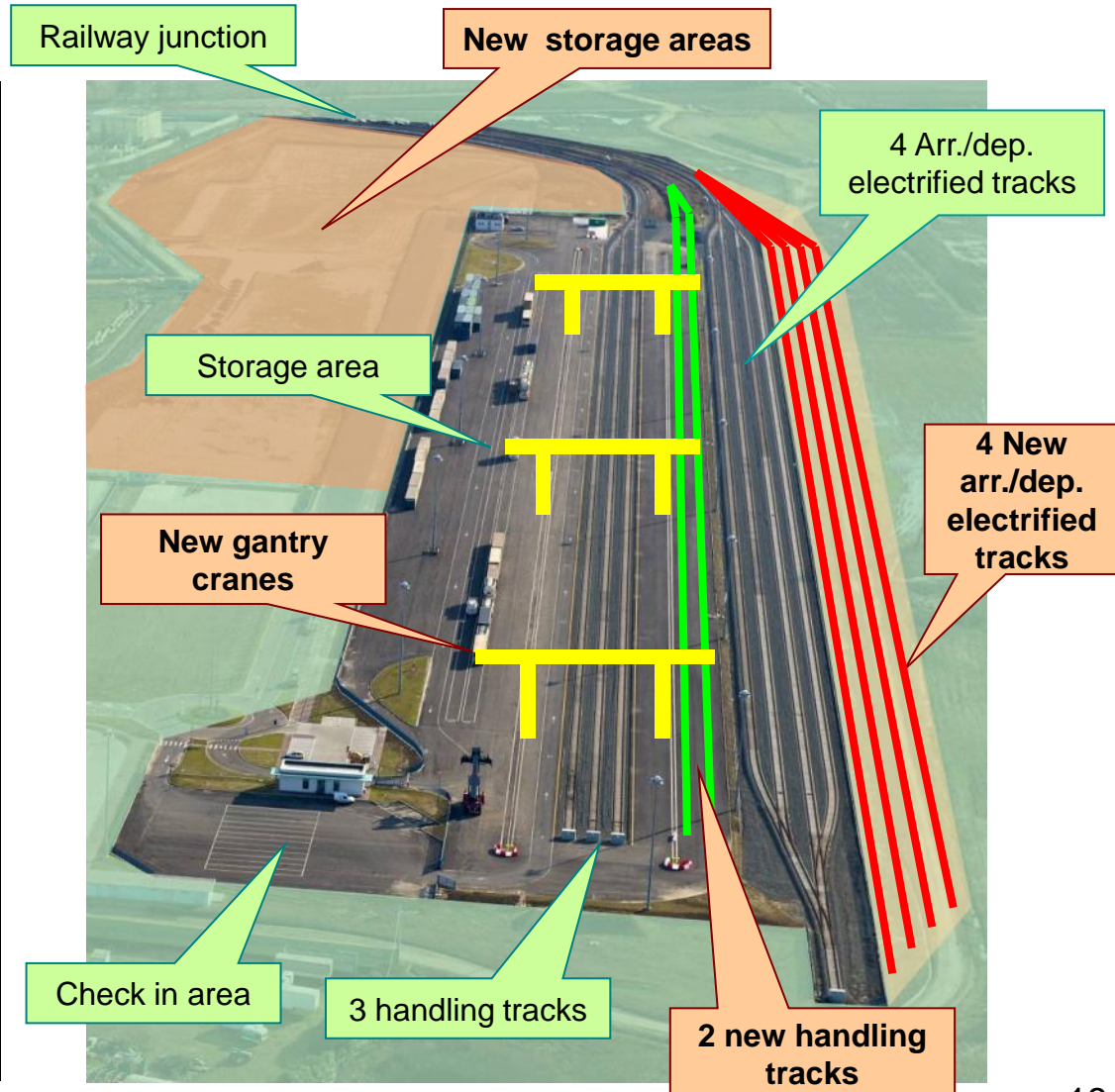
- (*) rt = roundtrip
 (**) ct = company train



MORTARA INTERMODAL TERMINAL

Intermodal terminal – expansion plan

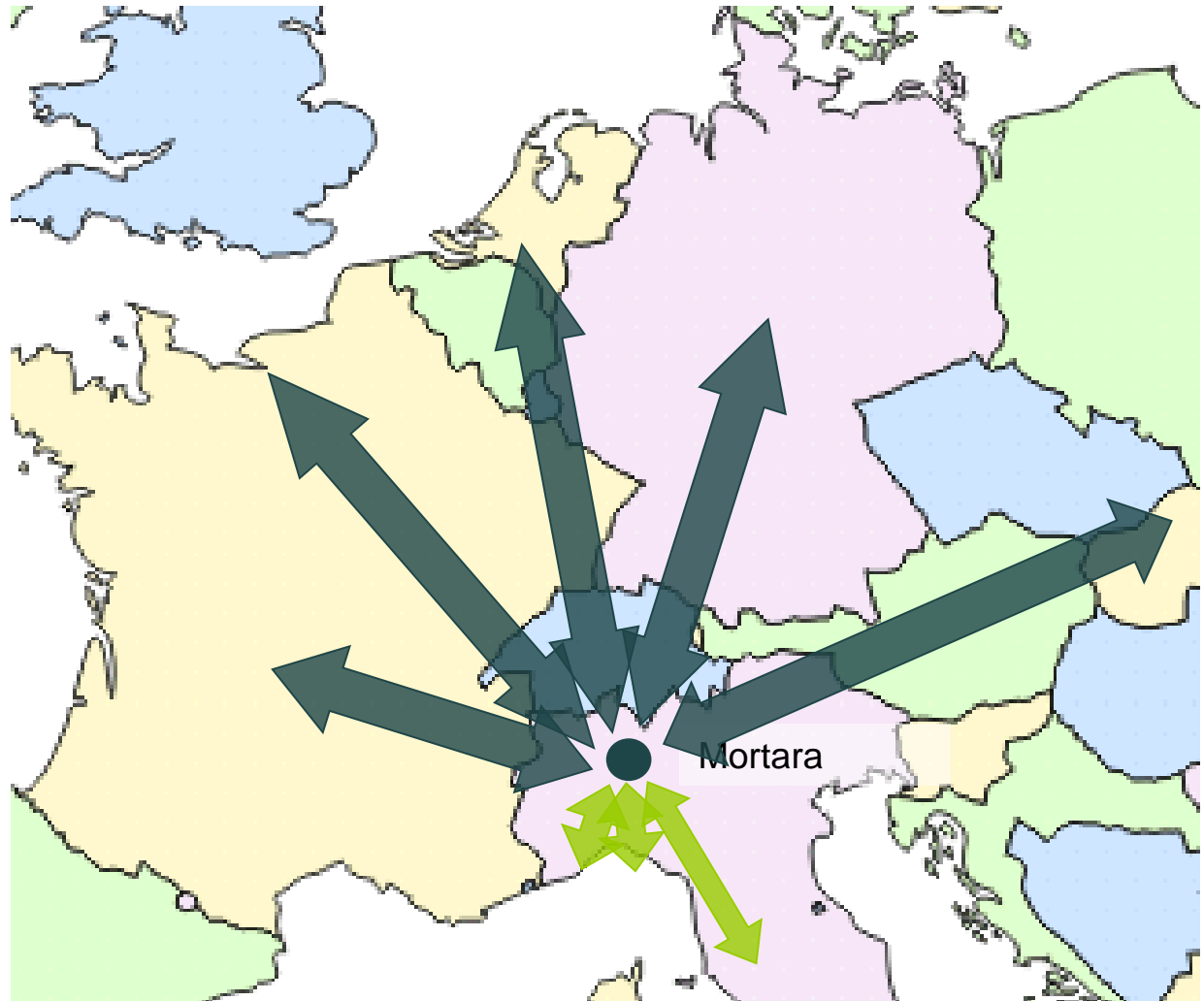
Intermodal Area of 140-200.000 sqm
3 + 2 new handling tracks 650 m long,
4 + 4 new arrival/departure electrified tracks 650 m long
Loading gauge (gabarit) up to P/C 80
New rail mounted gantry cranes
Additional storage areas up to 60.000 sqm
New terminal capacity: up to 10-12 pairs train/day, 130.000 ITU/year



MORTARA INTERMODODAL TERMINAL

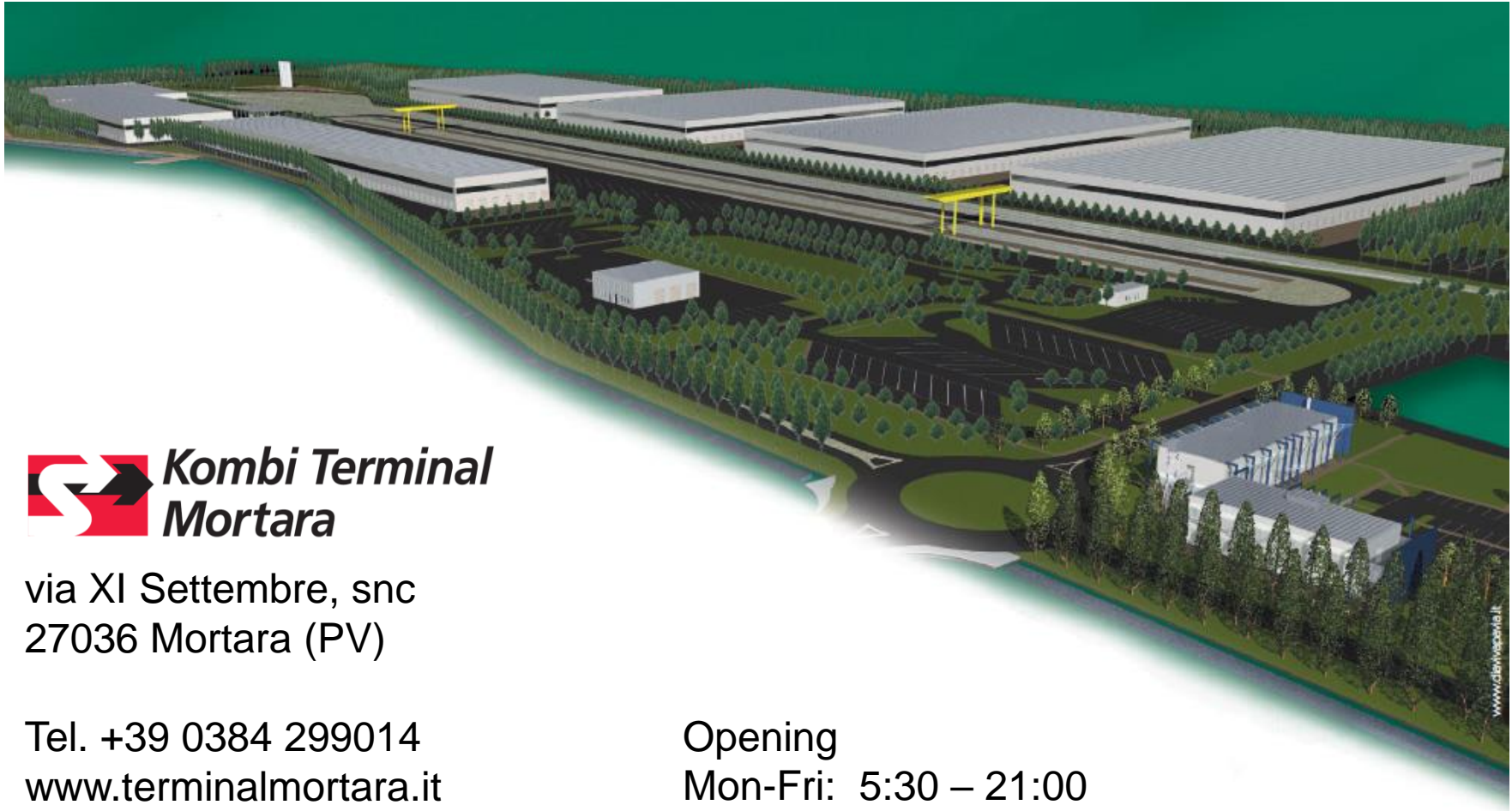
Intermodal terminal – our vision

A new **gateway**
between
Italy
and
Northern Europe



MORTARA INTERMODAL TERMINAL

Contact us



via XI Settembre, snc
27036 Mortara (PV)

Tel. +39 0384 299014
www.terminalgortara.it
info@terminalgortara.it

Opening
Mon-Fri: 5:30 – 21:00
Sat: 6:30 – 12:00